



MACHINETYPE	SIZE	POWER <sup>1)</sup>	CRUSHER SHAFT	Dimensions LxWxH <sup>2)</sup>
	HL I - 1222 ES	200 KW	2200mm	11300x2550x3400
	HL I - 1230 ES	200 KW	3000mm	12100x2550x3400

### ELECTRO-STATIONARY

	HL I - 1222 DM	280 KW	2200mm	12200x2550x3860
	HL I - 1230 DM	370 KW	3000mm	13000x2550x3860

### MOBILE 3-AXLE TRAILER

	HL I - 1222 DK	280 KW	2200mm	11400x2550x3480
	HL I - 1230 DK	370 KW	3000mm	12000x2550x3480

### CRAWLER TRACKS

	HL I - 1222 DH	280 KW	2200mm	11400x2550x2900
	HL I - 1230 DH	370 KW	3000mm	12200x2550x2900

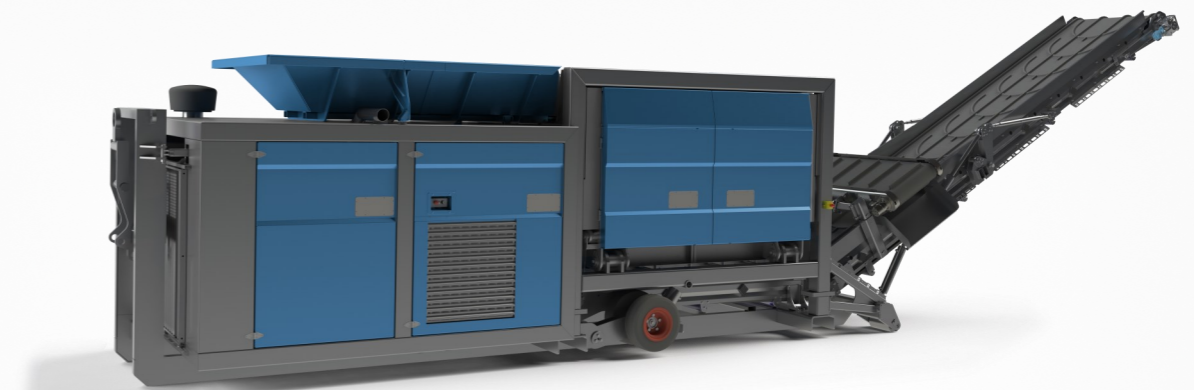
### HOOK LIFT FRAME

All details are approximate values of the standard version.

Machine equipment and accessories as required.

<sup>1)</sup> Optional drive power possible

<sup>2)</sup> Dimensions in working position



SINGLE-SHAFT CRUSHER

TWIN-SHAFT CRUSHER

SHREDDER

FINE SHREDDER

WOOD CHIPPER

ENVIRONMENTAL TECHNOLOGY



# Husmann

## Zerkleinerungstechnik



Maschinen- und Landmaschinenfabrik Husmann GmbH  
 Gerhard-Husmann-Straße 2  
 D-49762 Lathen  
 Tel.: +49 (0) 59 33 / 93 18 - 0  
 Fax: +49 (0) 59 33 / 93 18 - 50  
 info@husmann-web.de  
<https://husmann-zerkleinerungstechnik.de>



Technical changes, misprints and errors excepted. Status 04/2024

# HL I

## NEW GENERATION

SINGLE-SHAFT CRUSHER

HL I 1222 (2200mm crusher shaft)

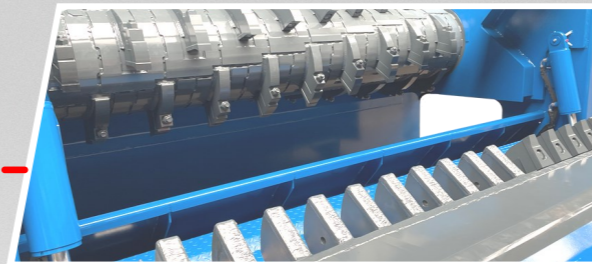
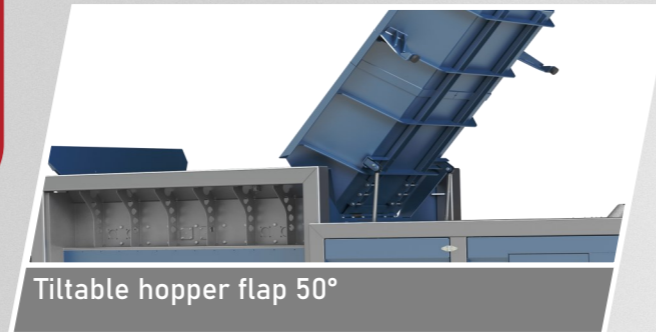
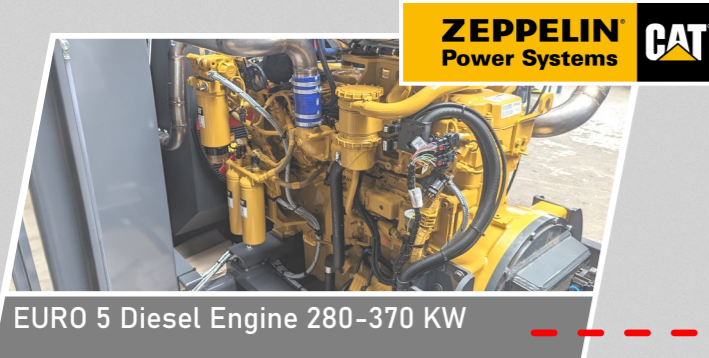
HL I 1230 (3000mm crusher shaft)



# Husmann HL I

Zerkleinerungstechnik  
SINGLE-SHAFT CRUSHER

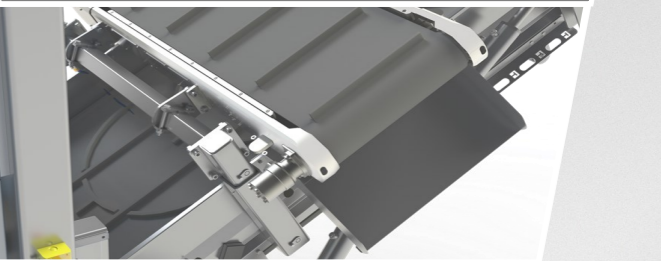
The »HL I« series with a crusher shaft stands out with quick-change, bolted blades, and a flexible, adjustable side comb. The system is protected against breakage due to the automatic reversing system in combination with the ejection unit.



Crusher unit (Screwable tools)

Conveyor belt 25° - 35°

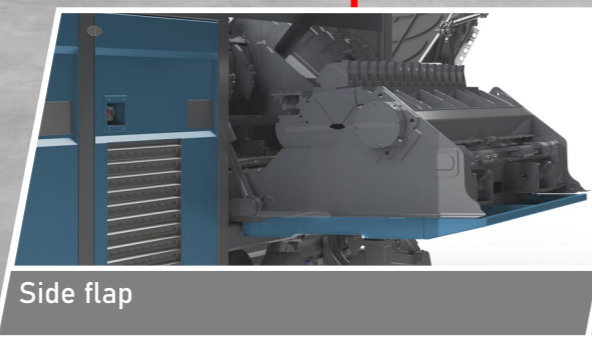
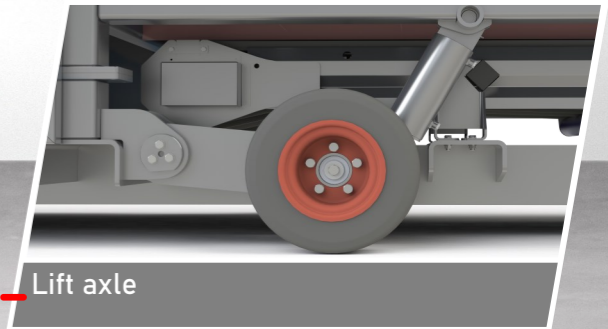
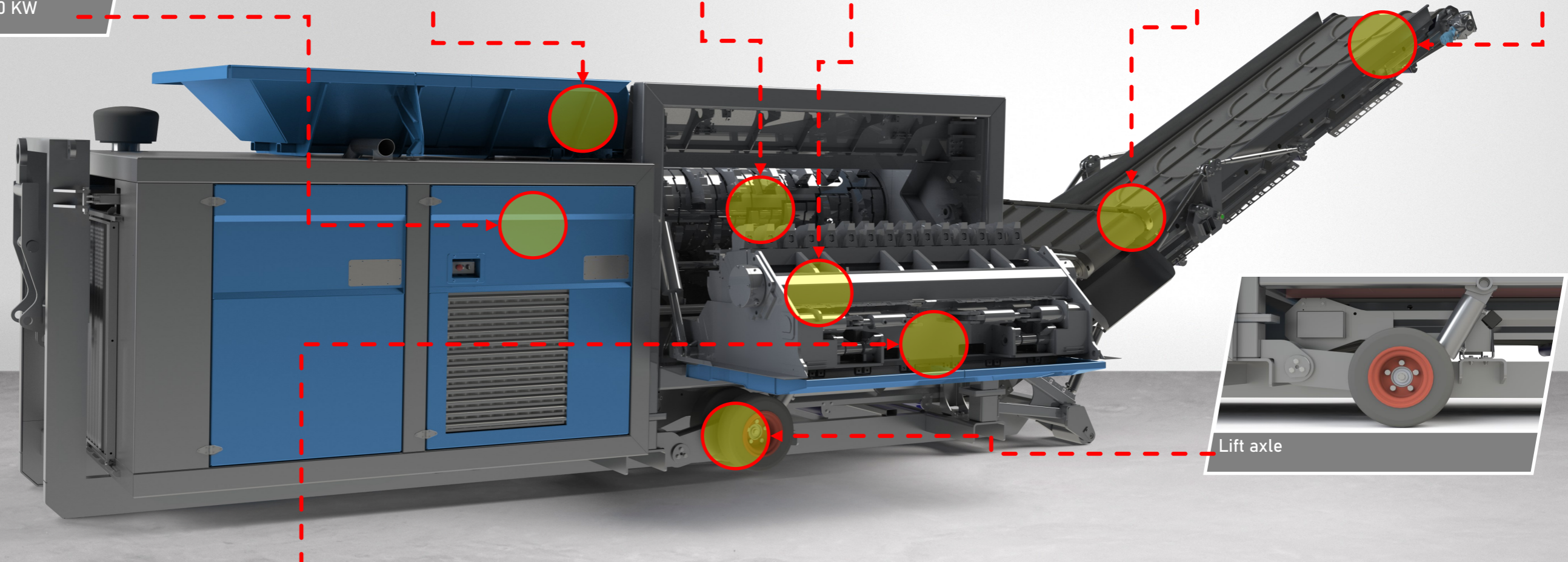
Different tools and the size of the screening grids allow the machines to be adapted to the intended use.



Screen technology

Magnet separator

## Examples of applications



The big lateral side flap allows an perfect access to the complete crusher unit for maintenance and repairs. Due to the integrated maintenance platform the service personnel are located between the crusher shaft and the comb bar. Repair work and the replacement of tools are possible without restrictions. Further these side flap is equipped with a hydraulic driven ejection comb.

